

**SECTION 00 91 01
ADDENDUM NUMBER 1**

DATE: JANUARY 18, 2022

PROJECT: OEHS/OHS BOILERS AND CHILLERS
1525 HARVEY ROAD, 4250 ROUTE 71
OSWEGO, ILLINOIS 60543

PROJECT NO: 21-158-1389

OWNER: COMMUNITY UNIT SCHOOL DISTRICT 308
71 STONEHILL ROAD
OSWEGO, ILLINOIS 60543

TO: PROSPECTIVE BIDDERS / PLAN HOLDERS OF RECORD

This Addendum forms a part of the Contract Documents and modifies the Bidding Documents dated January 6, 2022, with amendments and additions noted below. Acknowledge receipt of this Addendum in the space provided in the Bid Form. Failure to do so may subject the Bidder to disqualification.

This Addendum consists of Two (2) pages, Specification Sections 00 01 10 and 00 11 13 , and Drawing M410.

CHANGES TO INTRODUCTORY INFORMATION

1.01 DOCUMENT 00 01 10 - TABLE OF CONTENTS

A. Add "Section 00 91 01 - Addendum Number 1" to the listing.

CHANGES TO BIDDING REQUIREMENTS

2.01 DOCUMENT 00 11 13 - ADVERTISEMENT FOR BIDS

A. Under Article BID OPENING:

1. Delete Subparagraph and replace with the following:

"Sealed bids for all Contracts will be received by the Owner until **1:00 p.m. on Tuesday, January 25, 2022** in a sealed envelope addressed with the name of the Bidder, Owner, name and number of Contract, and the date and time of the Bid. Deliver to the Community Unit School District 308, Building and Grounds, Construction and Receiving, 71 Stonehill Road, Oswego, IL 60543, 630-636-3190. Bids will be publicly opened at that time."

CHANGES TO THE DRAWINGS

3.01 DRAWING M410 - OHS MECHANICAL FLOOR PLANS, SCHEDULES AND DETAILS

- A. Keynote 7.539, Add the following sentence to the end of the Keynote:
 - 1. "The roof is currently under warranty. The original installer for the roof is Lite Construction out of Montgomery, Illinois. 630-896-7220."
- B. Replace existing drawing M410 with the addended drawing M410 attached hereto.

END OF DOCUMENT

SECTION 00 01 10 TABLE OF CONTENTS		
PROCUREMENT AND CONTRACTING REQUIREMENTS		PAGES
Introductory Information		
00 01 01	Project Title Page	00 01 01-1-1
00 01 07	Seals Page	00 01 07-1-1
00 01 10	Table of Contents	00 01 10-1-3
00 01 15	Drawing Index	00 01 15-1-1
Bidding Requirements		
00 11 13	Advertisement for Bids	00 11 13-1-2
00 21 13	Instructions to Bidders	00 21 13-1-1
00 22 13	Supplementary Instructions to Bidders	00 22 13-1-2
00 31 13	Preliminary Schedule	00 31 13-1-1
00 41 13	Bid Form - Stipulated Sum	00 41 13-1-4
00 43 13	Bid Security Form	00 43 13-1-1
00 43 23	Bid Form Supplement - List of Alternates	00 43 23-1-1
00 45 13	Bidder's Qualifications	00 45 13-1-2
00 45 36	Contractor's Certification for Equal Employment Opportunity	00 45 36-1-2
00 45 46.01	Contractor's Certification of Legal Eligibility for Bidding	00 45 46.01-1-1
00 45 46.02	Contractor's Drug-Free Workplace Certification	00 45 46.02-1-2
00 45 46.03	Sexual Harassment Certificate	00 45 46.03-1-1
00 45 46.05	Smoking/Tobacco Policy Compliance Certificate	00 45 46.05-1-1
Contracting Requirements		
00 52 00	Agreement Form	00 52 00-1-1
00 72 00	General Conditions	00 72 00-1-1
00 73 00	Supplementary Conditions	00 73 00-1-15
00 73 40	Labor and Wage Requirements	00 73 40-1-2
00 91 01	Addendum Number 1 [Addendum # 1]	00 91 01-1-2
SPECIFICATIONS		PAGES
Division 01 -- General Requirements		
01 10 00	Summary	01 10 00-1-2
01 20 00	Price and Payment Procedures	01 20 00-1-5
01 21 00	Allowances	01 21 00-1-1
01 23 00	Alternates	01 23 00-1-1
01 30 00	Administrative Requirements (1 page attachment)	01 30 00-1-10
01 41 00	Regulatory Requirements	01 41 00-1-2

01 42 00	References	01 42 00-1-4
01 50 00	Temporary Facilities and Controls	01 50 00-1-2
01 60 00	Product Requirements (1 page attachment)	01 60 00-1-4
01 61 16	Volatile Organic Compound (VOC) Content Restrictions	01 61 16-1-2
01 61 16.01	Accessory Material VOC Content Certification Form	01 61 16.01-1-1
01 70 00	Execution and Closeout Requirements	01 70 00-1-8
01 77 00	Closeout Procedures	01 77 00-1-2
01 78 00	Closeout Submittals	01 78 00-1-5
01 79 00	Demonstration and Training	01 79 00-1-3
Division 02 -- Existing Conditions		
02 41 00	Demolition	02 41 00-1-2
Division 07 -- Thermal and Moisture Protection		
07 84 00	Firestopping	07 84 00-1-4
07 92 00	Joint Sealants	07 92 00-1-3
Division 08 -- Openings		
08 11 13	Hollow Metal Doors and Frames	08 11 13-1-4
08 71 00	Door Hardware	08 71 00-1-7
Division 09 -- Finishes		
09 91 23	Interior Painting	09 91 23-1-5
Division 23 -- Heating, Ventilating, and Air-Conditioning (HVAC)		
23 05 19	Meters and Gauges for HVAC Piping	23 05 19-1-2
23 05 53	Identification for HVAC Piping and Equipment	23 05 53-1-2
23 05 93	Testing, Adjusting, and Balancing for HVAC	23 05 93-1-3
23 07 13	Duct Insulation	23 07 13-1-3
23 07 19	HVAC Piping Insulation	23 07 19-1-3
23 09 13	Instrumentation and Control Devices for HVAC	23 09 13-1-6
23 11 23	Facility Natural-Gas Piping	23 11 23-1-3
23 21 13	Hydronic Piping	23 21 13-1-5
23 21 14	Hydronic Specialties	23 21 14-1-3
23 21 23	Hydronic Pumps	23 21 23-1-3
23 31 00	HVAC Ducts and Casings	23 31 00-1-3
23 34 16	Centrifugal HVAC Fans	23 34 16-1-2
23 52 16	Condensing Boilers	23 52 16-1-8
23 64 16	Centrifugal Water Chillers	23 64 16-1-5

Division 26 -- Electrical

26 05 00	Basic Electrical Requirements	26 05 00-1-9
26 05 83	Wiring Connections	26 05 83-1-2
26 21 00	Low-Voltage Electrical Service Entrance	26 21 00-1-3
26 24 13	Switchboards	26 24 13-1-4

END OF SECTION

**SECTION 00 11 13
ADVERTISEMENT FOR BIDS**

**PROJECT: OEHS/OHS BOILERS AND CHILLERS
 1525 HARVEY ROAD, 4250 ROUTE 71
 OSWEGO, ILLINOIS 60543**

**OWNER: COMMUNITY UNIT SCHOOL DISTRICT 308
 71 STONEHILL ROAD
 OSWEGO, ILLINOIS 60543**

**ARCHITECT/
ENGINEER: KLUBER ARCHITECTS + ENGINEERS
 41 W. BENTON STREET
 AURORA, ILLINOIS 60506**

DESCRIPTION OF THE WORK:

The Owner will receive bids for the construction of Boilers and Chillers. The Work will include: OEHS - Replacement of two steam absorption chillers with two new electric centrifugal chillers. Work includes mechanical, temperature controls and electrical work. Alternate No. 1 will be to replace cooling tower fill and perform mechanical service. OHS - Alternate No. 2 Replace two forced draft, gas fired boilers with two high efficiency condensing boilers. Work includes mechanical, temperature controls and electrical work.

The Owner will be applying for a Utility Energy Rebate. Energy Efficiency Measures associated with this project require installing contractor/s to be certified with Illinois Commerce Commission (ICC) as a Certified Energy Efficiency Measures Installer.

BASIS OF BIDS:

Bids will be a single contract, stipulated sum.

TIME OF COMPLETION:

The Work will commence on Monday, March 7, 2022, and be performed such that the Project will be Substantially Complete as indicated in the Document 00 31 13 - Preliminary Schedule.

BID OPENING:

Sealed bids for all Contracts will be received by the Owner until **1:00 p.m. on Tuesday, January 25, 2022** in a sealed envelope addressed with the name of the Bidder, Owner, name and number of Contract, and the date and time of the Bid. Deliver to the Community Unit School District 308, Building and Grounds, Construction and Receiving, 71 Stonehill Road, Oswego, IL 60543, 630-636-3190. Bids will be publicly opened at that time. **[Addendum # 1]**

EXAMINATION AND PROCUREMENT OF DOCUMENTS:

The Bidding Documents will consist of one full set of Drawings and one Project Manual.

The Bidding Documents may be viewed free of charge online at www.kluberplanroom.com. Click on "Public Jobs", then "View Plans" or "View Specs" to browse through the drawings or specifications. No bid deposit is required to obtain the Bidding Documents. Full sets of plans and specifications in PDF format may be downloaded for a one-time charge of \$9.95. Printed copies of plans and specifications may be obtained for the cost of reproduction as indicated at the www.kluberplanroom.com project website.

The Bidding Documents may be examined at the Architect's office:

Aurora Illinois Office: 41 W. Benton Street, Aurora, IL 60506.

BID SECURITY:

A Bid security in the amount of 10 percent of the total Bid is required.

PRE-BID MEETING:

A pre-bid meeting will be held at Community Unit School District 308, Building and Grounds, Construction and Receiving, 71 Stonehill Road, Oswego, IL 60543, 630-636-3190 at 10:00 a.m. on Wednesday, January 12, 2022. Prospective bidders are requested to attend.

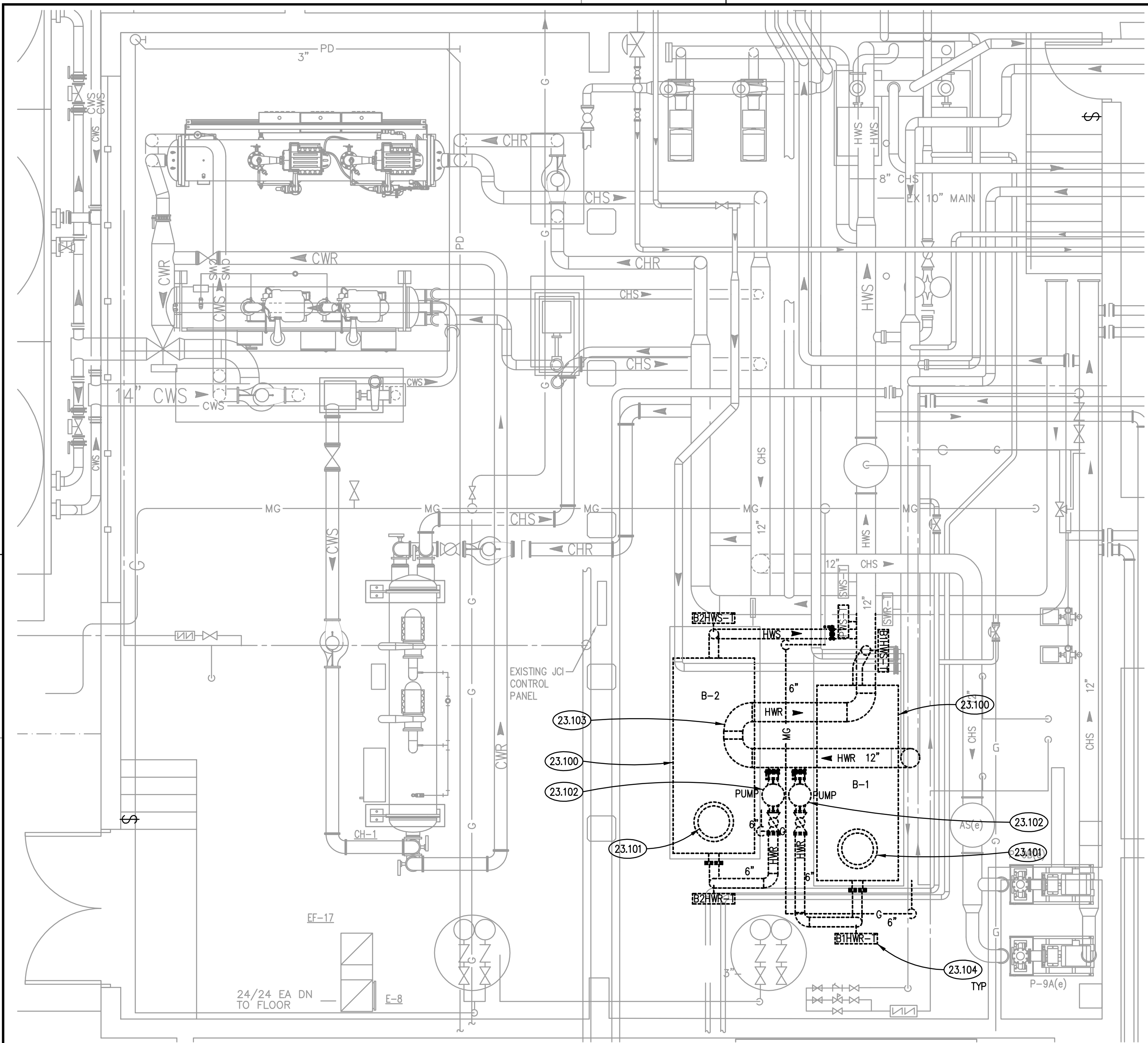
RIGHT TO REJECT BIDS:

The Owner reserves the right to reject any and all bids and to waive any errors, omissions or irregularities in the bids or the bidding procedure when, in the opinion of the Owner, such action will serve its best interests. Any bid which is not accompanied by the required bid security or by any other documents or certifications required by the Bidding Documents, and any bid which is in any way incomplete or irregular, is subject to rejection at the sole discretion of the Owner.

GOVERNING LAWS AND REGULATIONS:

Prevailing wage rates will apply and must be included in the Bid amount.

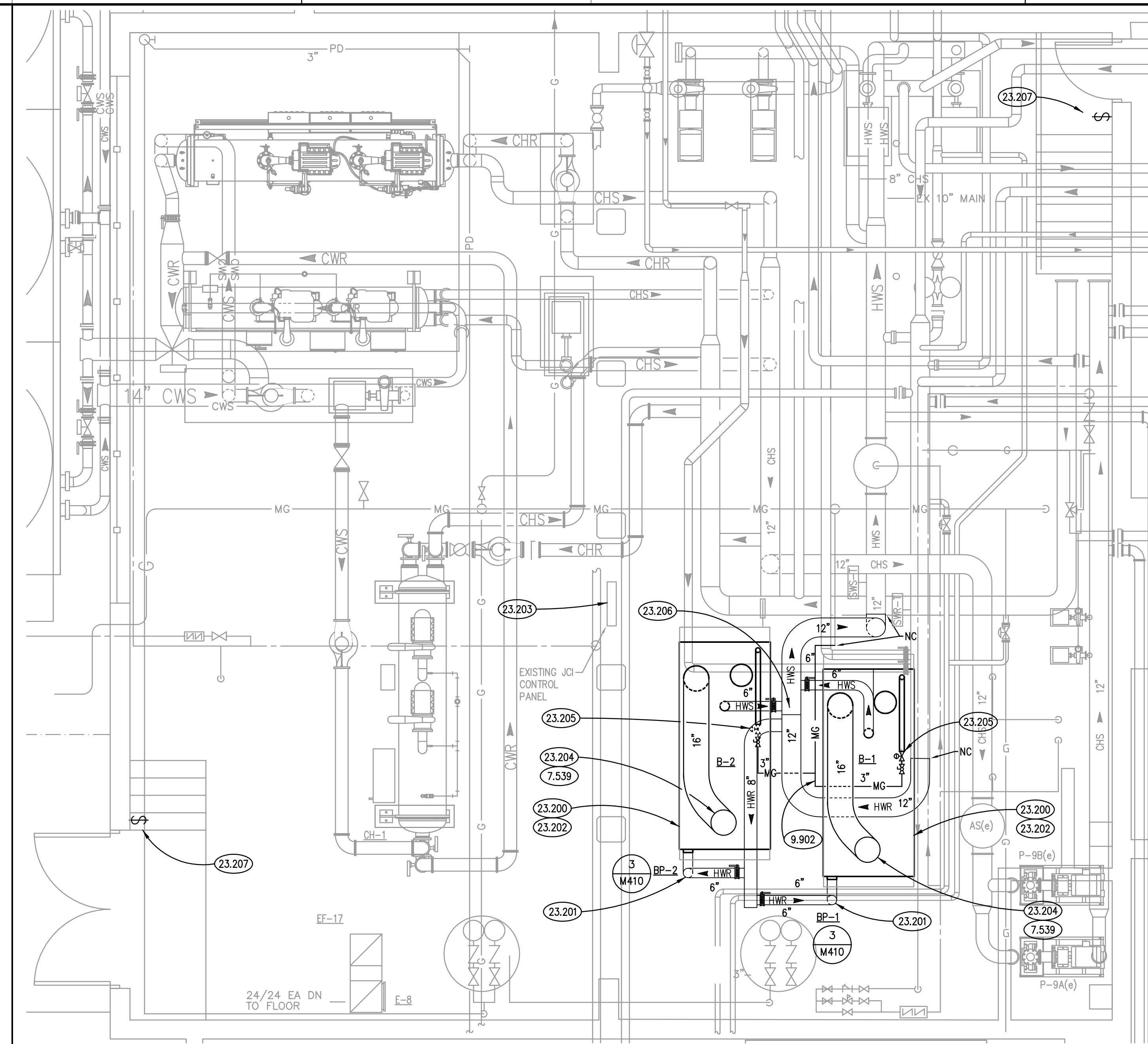
END OF DOCUMENT



MECHANICAL ROOM DEMOLITION PLAN

SCALE: 1/4" = 1'-0"

2



MECHANICAL ROOM NEW WORK PLAN

SCALE: 1/4" = 1'-0"

1

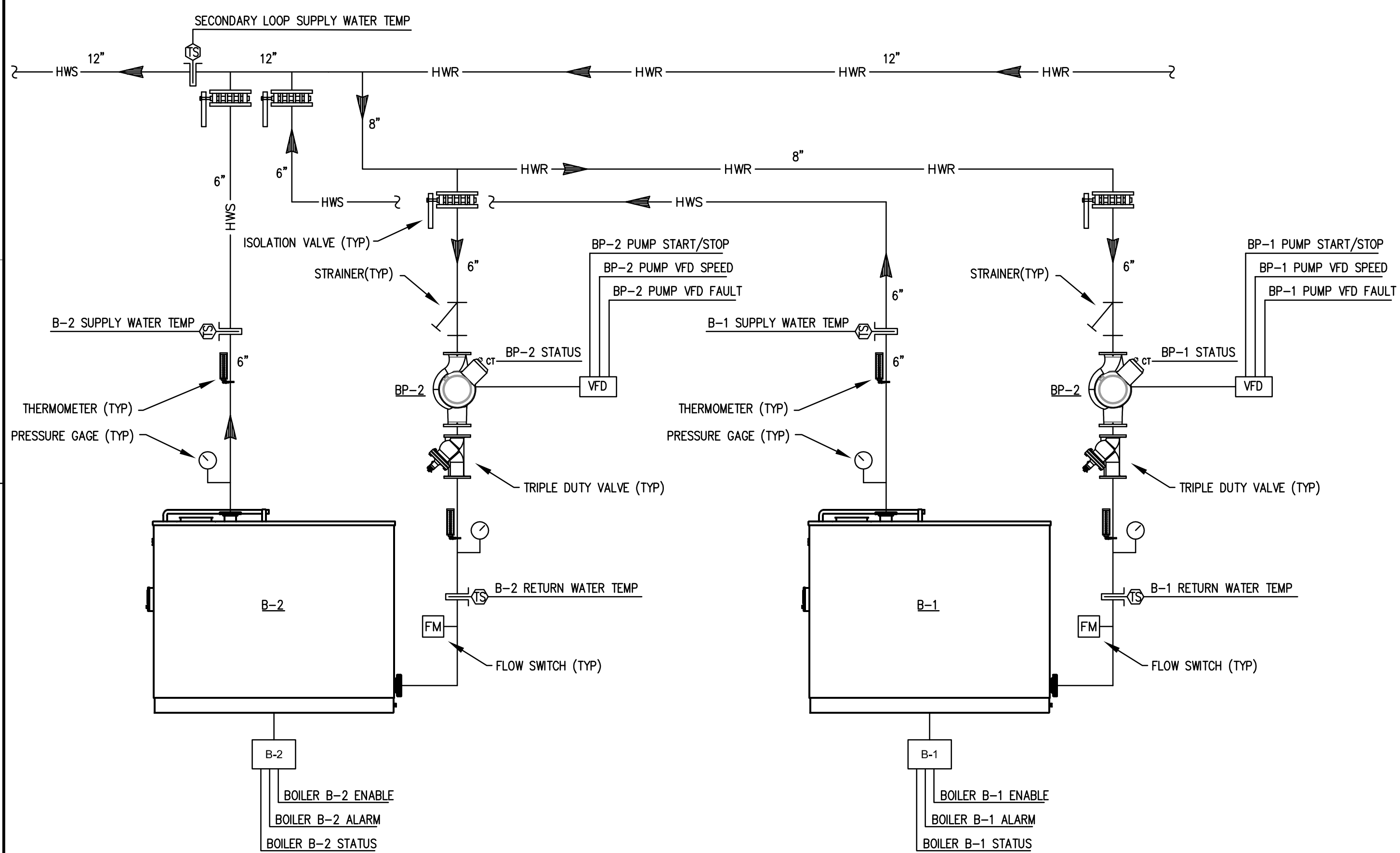
KEYNOTES

KEYNOTES ARE NOT ALWAYS REPEATED ACROSS ALL DRAWINGS ON THIS SHEET. AN UN-KEYNOTED ITEM ON THIS SHEET IS THE SAME AS A KEYNOTED ITEM ON THIS SHEET HAVING THE SAME GRAPHIC APPEARANCE.

- 7.539 ALTERNATE NO. 2: ROOFING ASSEMBLY: FLASH NEW BOILER VENT INTO EXISTING ROOF SURFACE IN ACCORDANCE WITH EXISTING ROOFING MANUFACTURER'S REQUIREMENTS, SO AS NOT TO VOID EXISTING ROOF WARRANTY, AND IN ACCORDANCE WITH NATIONAL ROOFING CONTRACTORS ASSOCIATION (NRCA) 2015 MEMBRANE ROOF SYSTEMS ROOFING MANUAL. CONSTRUCTION DETAIL FROM THE ROOF IS CURRENTLY UNDER WARRANTY. THE ORIGINAL INSTALLER WAS LITE CONSTRUCTION OUT OF MONTGOMERY, ILLINOIS. 630-896-7220.
- 9.902 ALTERNATE NO. 2: PAINT NEW GAS PIPING YELLOW COLOR MATCHING EXISTING GAS PIPING PAINT COLOR, TYPICAL.
- 23.100 ALTERNATE NO. 2: REMOVE BOILER ASSOCIATED HOT WATER SUPPLY/RETURN PIPING AND SPECIALTIES.
- 23.101 ALTERNATE NO. 2: REMOVE BOILER VENTING FROM BOILER AND UP THROUGH ROOF. PROVIDE TEMPORARY CAP ON ROOF OPENING FOR NEW BOILER VENTING.
- 23.102 ALTERNATE NO. 2: REMOVE IN-LINE PUMPS AND ALL ASSOCIATED SPECIALTIES.
- 23.103 ALTERNATE NO. 2: REMOVE SECTION OF SECONDARY HOT WATER PIPING TO ALLOW FOR CLEARANCE/INSTALLATION OF NEW BOILER WITHOUT INTERFERING WITH CONNECTION REQUIREMENTS.
- 23.104 ALTERNATE NO. 2: REMOVE TEMPERATURE CONTROL COMPONENTS AND ALL ASSOCIATED WIRING THAT IS NOT TO BE REUSED.
- 23.200 ALTERNATE NO. 2: PROVIDE NEW BOILER AND ALL ASSOCIATED SPECIALTIES.
- 23.201 ALTERNATE NO. 2: PROVIDE NEW IN-LINE, SENSORLESS, SPLIT COUPLED PUMP HAVING MOTOR MOUNTED VFD. MOUNT PUMP IN VERTICAL HWR PIPE. BALANCE PUMP VFD SETTING TO MAINTAIN SCHEDULED GPM. DO NOT USE TRIPLE DUTY VALVE FOR BALANCING.
- 23.202 ALTERNATE NO. 2: COORDINATE AND WORK WITH EARTHWISE ENVIRONMENTAL, CHRIS KOEPEKE: 630-774-0419, (OWNERS WATER TREATMENT COMPANY) FOR INSTRUCTIONS ON WHICH PIPE TAPS ARE TO BE REMOVED/REMAIN AND WHERE TO LOCATE NEW TAPS (IF REQUIRED) FOR CHEMICAL TREATMENT OF CHILLED WATER AND CONDENSER WATER SYSTEMS, PIPING CLEANING CHEMICALS AND WATER TREATMENT.
- 23.203 ALTERNATE NO. 2: PROVIDE MODIFICATIONS TO JOI METASYS BUILDING AUTOMATION SYSTEM. MODIFICATIONS INCLUDE BUT ARE NOT LIMITED TO: REMOVAL OF SENSORS, POINTS AND GRAPHICS; ADDITION OF SENSORS, POINTS AND GRAPHICS. PROVIDE ALL ALGORITHMS AND PROGRAMMING FOR NEW EQUIPMENT TO MEET THE SEQUENCE OF OPERATIONS. SERVICING TEMPERATURE CONTRACTORS ARE APPLIED CONTROLS, INC OR JOHNSON CONTROLS, INC. ALL EQUIPMENT TAGS AND SYSTEM GRAPHICS FOR HEATING WATER SYSTEM SHALL HAVE MATCHING TAGS. MODIFY AS REQUIRED. COORDINATE WITH OWNER.
- 23.204 ALTERNATE NO. 2: PROVIDE BOILER VENTING UP THROUGH EXISTING ROOF OPEN AND TERMINATED WITH VELOCITY CONE IN ACCORDANCE WITH BOILER MANUFACTURER RECOMMENDATIONS. PATCH ROOF PENETRATION WEATHER-TIGHT.
- 23.205 ALTERNATE NO. 2: PROVIDE SHUT-OFF VALVE AND PRESSURE REGULATOR FOR MEDIUM PRESSURE GAS TO BOILER. PROVIDE PRESSURE REGULATOR AND INSTALLATION IN ACCORDANCE WITH BOILER MANUFACTURER REQUIREMENT.
- 23.206 ALTERNATE NO. 2: PROVIDE HWR AND HWS CONNECTIONS TO SECONDARY LOOP NO FURTHER THAN 36" APART.
- 23.207 ALTERNATE NO. 2: PROVIDE CONNECTION BETWEEN BOILERS AND SHUT OFF SWITCHES AT MECHANICAL ROOM ENTRANCES.

GENERAL NOTES

- REFER TO DRAWING G100 FOR PROJECT GENERAL NOTES.
- ALL PIPING IS SHOWN DIAGRAMMATICALLY AND DOES NOT SHOW ALL REQUIRED FITTINGS, OFFSETS, DROPS AND RISES. THE CONTRACTOR IS RESPONSIBLE TO PROVIDE ALL MATERIAL AND LABOR FOR A COMPLETE AND WORKING SYSTEM. COORDINATE WITH OTHER TRADES FOR SPACE AVAILABLE AND RELATIVE LOCATIONS OF EQUIPMENT, PIPING, DUCTWORK, ETC.
- EXISTING PIPING AND DUCTWORK INDICATED ON THESE PLANS SHALL BE FIELD VERIFIED FOR EXACT LOCATIONS, QUANTITY AND PIPE SIZES.
- SPACE ALLOCATION, COORDINATION WITH ELECTRICAL, ARCHITECTURAL & OTHER MECHANICAL COMPONENTS HAVE BEEN MADE WITH RESPECT TO ALL EQUIPMENT SCHEDULED ON THESE DRAWINGS AND IN THE SPECIFICATIONS OF THE FIRST NAMED MANUFACTURER ONLY. OTHER MANUFACTURERS ARE ACCEPTABLE PROVIDED THEY MEET PERFORMANCE REQUIREMENTS AND AFOREMENTIONED COORDINATION.
- OBTAIN AND PAY ALL COSTS FOR PERMITS, LICENSES, CERTIFICATE FILING AND ALL INSPECTIONS BY AUTHORITIES HAVING JURISDICTION.
- EXISTING ROOFING SYSTEM ABOVE MECHANICAL/BOILER ROOM IS FULLY-ADHERED NON-REINFORCED 60 MIL EPDM OVER 3-1/2" POLYISOCYANURATE INSULATION. EXISTING ROOFING SYSTEM PRODUCTS ARE MANUFACTURED BY FIRESTONE BUILDING PRODUCTS AND ROOFING SYSTEM IS CURRENTLY UNDER WARRANTY. ORIGINAL INSTALLING CONTRACTOR IS MALCOR ROOFING COMPANY, (630) 896-6479.



BOILER TEMPERATURE CONTROL SCHEMATIC

SCALE: NTS

3

HOT WATER HEATING BOILER SCHEDULE

MARK	LOCATION	TYPE	BOILER POWER (HP)	FLUID MEDIUM			FUEL		RELIEF VALVE SETTING (PSIG)	ELECTRICAL (V/PHRZ)	MINIMUM EFFICIENCY	MODEL	NOTES		
				FLUID	EWT / LWT (°F)	WATER FLOW RATE (GPM)	MAX PRESS DROP (FT)	NATURAL GAS INPUT (MBH)						NATURAL GAS OUTPUT (MBH)	
B-1	MECH ROOM	FIRE TUBE	210	WATER	120/148	500	4.6	8000	7040	35	50	460/3/60	94.4	CFLC 8000	1
B-1	MECH ROOM	FIRE TUBE	210	WATER	120/148	500	4.6	8000	7040	35	50	460/3/60	94.4	CFLC 8000	1

NOTES

- MODEL BASED ON CLEAVER BROOKS.

PUMP SCHEDULE

MARK	WATER FLOW RATE (GPM)	HEAD (FT)	TYPE	MOTOR POWER (HP)	ELECTRICAL (V/PHRZ)	MOTOR SPEED (RPM)	SERVICE	MODEL	NOTES
BP-1	500	20	VERT INLINE	5	460/3/60	1115	BOILER 1	4300 0608-005	1, 2
BP-2	500	20	VERT INLINE	5	460/3/60	1115	BOILER 2	4300 0608-005	1, 2

NOTES

- MODEL BASED ON ARMSTRONG.
- SENSORLESS VARIABLE SPEED CONTROL.

BOILERS SEQUENCE OF OPERATIONS

MODIFY BAS AS REQUIRED FOR NEW BOILER CONTROLS TO OPERATE HOT WATER SUPPLY TEMPERATURE RESET TEMPERATURE.

BOILER (B-1, B-2):

THE BOILERS SHALL BE ENABLED BY THE BAS CONTROL PANEL WHEN THE SYSTEM SWITCHES TO HEATING MODE. ALL SET POINTS SHALL BE ADJUSTABLE.

THE BOILER CONTROLLER SHALL CONTROL THE OPERATION OF THE TWO BOILERS. THE LEAD BOILER SHALL BE ENABLED WHEN THE OUTSIDE AIR TEMPERATURE FALLS BELOW 60 DEGREES F (ADJ.). THE BOILER AND ASSOCIATED PUMP SHALL BE ENERGIZED. THE BOILER CONTROL PANEL SHALL EQUALIZE THE RUN TIME OF THE TWO BOILERS AUTOMATICALLY AT SET INTERVALS.

THE LEAD BOILER SHALL MODULATE ITS FIRING RATE TO MAINTAIN THE PRIMARY LOOP HEATING WATER TEMPERATURE SET POINT. LOOP SUPPLY WATER TEMPERATURE SHALL BE CONNECTED DIRECTLY TO BOILER CONTROL PANEL. IF THE LEAD BOILER IS NOT ABLE TO MAINTAIN SET POINT THE LAG BOILER SHALL BE ENERGIZED.

THE SECONDARY LOOP HEATING WATER TEMPERATURE SHALL BE RESET BASED ON OUTDOOR AIR TEMPERATURE. THE WATER TEMPERATURE SHALL BE 160 DEGREES F WHEN THE OUTDOOR AIR TEMPERATURE IS -4 DEGREES F. THE WATER TEMPERATURE SHALL BE 80 DEGREES F WHEN THE OUTDOOR AIR TEMPERATURE IS 60 DEGREES F. TEMPERATURE RESET CURVES AND SET POINTS SHALL BE ADJUSTABLE.

AN ALARM SHALL BE GENERATED IF THERE IS A BOILER ALARM OR A LOW WATER LEVEL ALARM. BOILERS SHALL BE SHUTDOWN UPON A REFRIGERANT DETECTION ALARM.

BOILER PUMP (BP-1, BP-2):

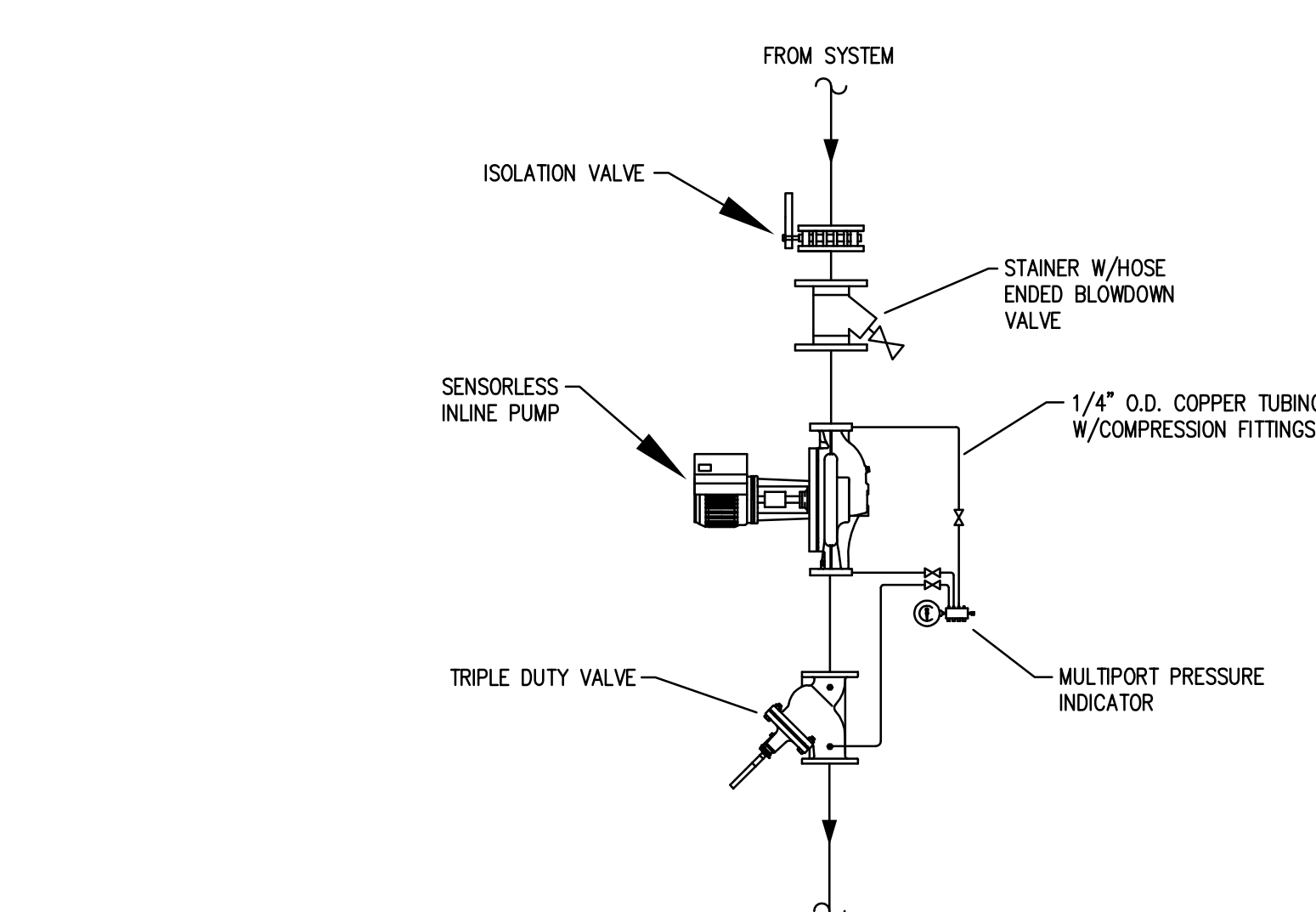
THE BOILER PUMPS SHALL BE ENABLED WHEN THE ASSOCIATED BOILER IS ENABLED. IF THE PUMP FAILS, THE LAG BOILER AND ASSOCIATED PUMP SHALL BE ENERGIZED.

AN ALARM SHALL BE GENERATED UPON A PUMP FAULT STATUS.

VERTICAL IN-LINE PUMP DETAIL

SCALE: NTS

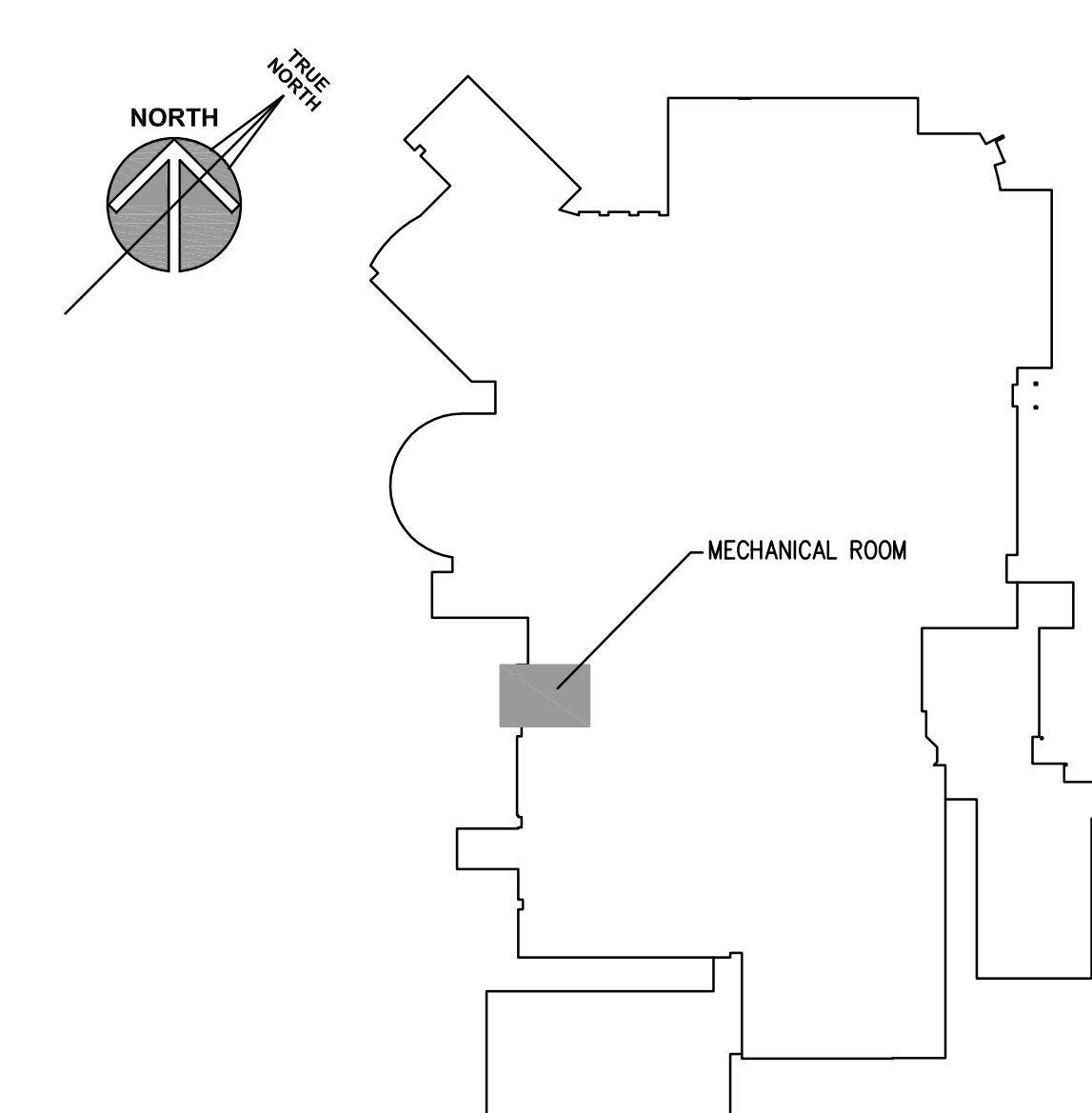
3



NOTES

- SUPPORT PUMP IN ACCORDANCE WITH MANUFACTURER'S INSTRUCTIONS.
- VERTICAL SPLIT COUPLED PUMP SHALL BE ABLE TO BE INSTALLED IN HORIZONTAL POSITION.

KEYPLAN



ISSUED

01/01/22

ADDENDUM ONE

1

JOB NO.

21-158-1389

DRAWN

DDW

CHECKED

DDW

APPROVED

DDW

SHEET TITLE

OHS MECHANICAL

FLOOR PLANS,

SCHEDULES AND

DETAILS

SHEET NUMBER

M410

OSWEGO COMMUNITY UNIT SCHOOL DISTRICT 308
4175 ROUTE 71
OSWEGO, ILLINOIS 60543

OEHS - CHILLER REPLACEMENT / OHS - BOILER REPLACEMENT

Kluber
Architects + Engineers

Kluber, Inc.
Aurora, Illinois 60606
Tel: 630.406.1213
Chicago, Illinois 60606
Tel: 312.667.6870
www.kluberinc.com