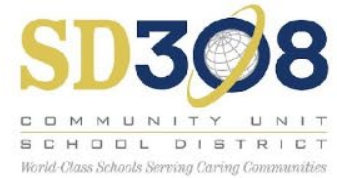


BOE *Community Advisory Council (CAC)*



- **Purpose**

- Involve Community members in feedback and decision-making sessions that incorporate multiple points of view
- Avoids Advisory Committees functioning as silos
- Sharing of expertise from all committees to unify into one voice and learn from each other's perspectives and knowledge

- **Membership**

- Superintendent and DAC Administrators as needed
- First invite to all 2021-22 Policy, Finance , Equity, and Teaching and Learning committee members
- Depending on interest, more people could be invited
- BOE members to attend on a rotating basis or assigned to this Council (need a quorum)

- **Agenda**

- Topics added by DAC or BOE

Meetings open to the public and agendas posted with time for public comment

BOE *Advisory Committees*

- **Purpose**

- Create an environment for board members and district administration staff to have crucial and complex conversations
- With this new structure, BOE members will be able to have deeper discussions and better understand the issues at hand
- No intent to lose transparency or restrict community member involvement. In fact, a new method for community involvement and interaction is proposed on the next slide
- **Continue the Finance, Policy, Equity, and Teaching and Learning Advisory Committees** at this time

- **Membership**

- Two Board Members and DAC Administrator lead or subject matter experts

- **Agenda**

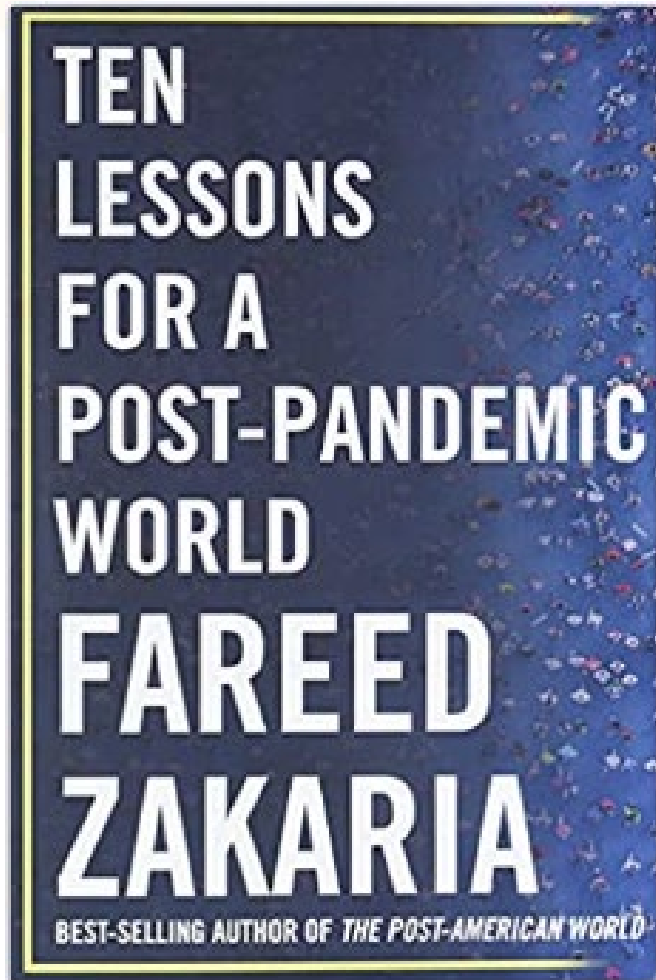
- Topics added by DAC or BOE

Meetings open to the public and agendas posted with time for public comment

Why are we changing the Board Committee structure?

How do we continue to improve through collaboration and community input?

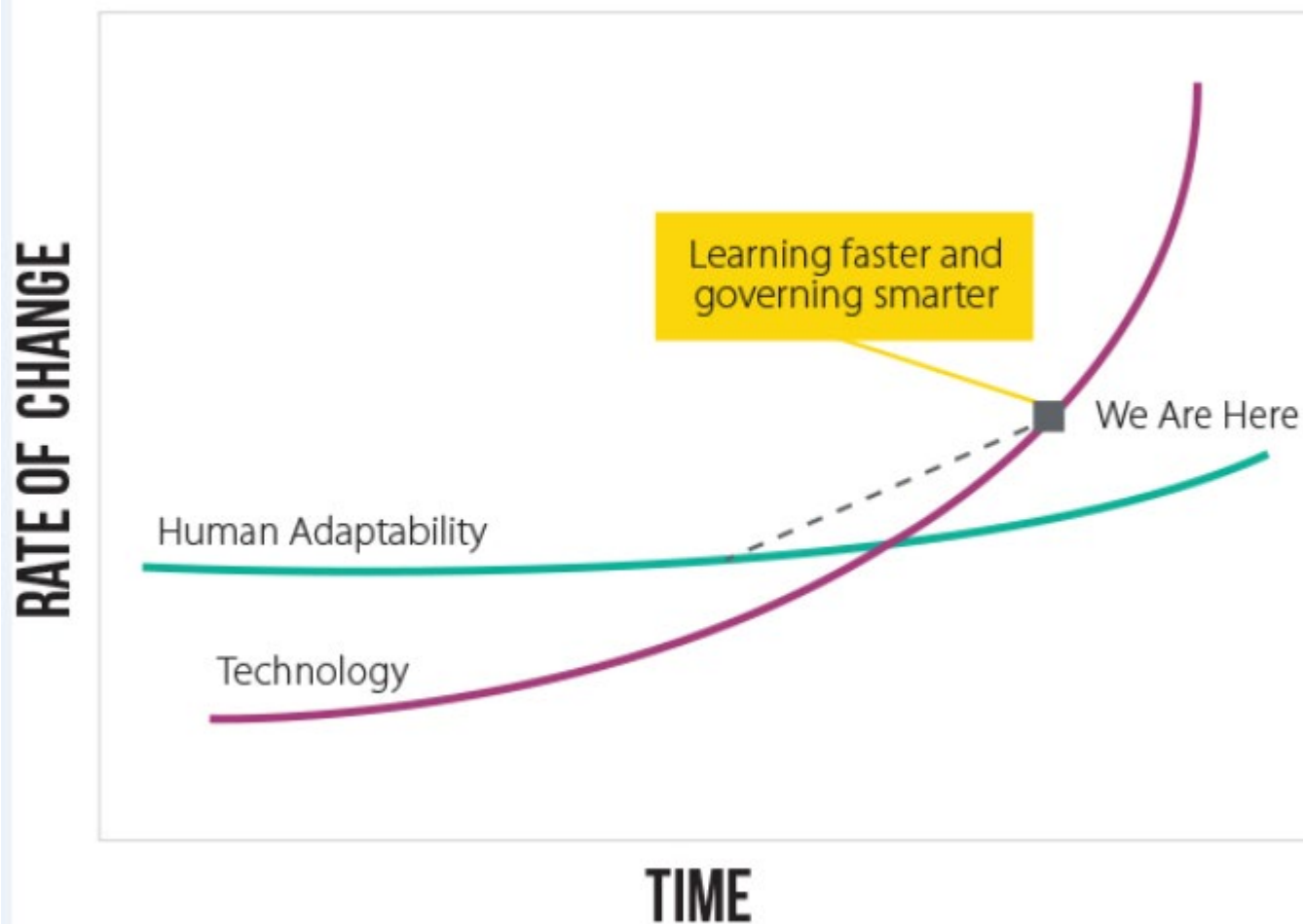




All forms of governance strive for the three things but only accomplish two well. Struggle and conflict occur over choosing which two.

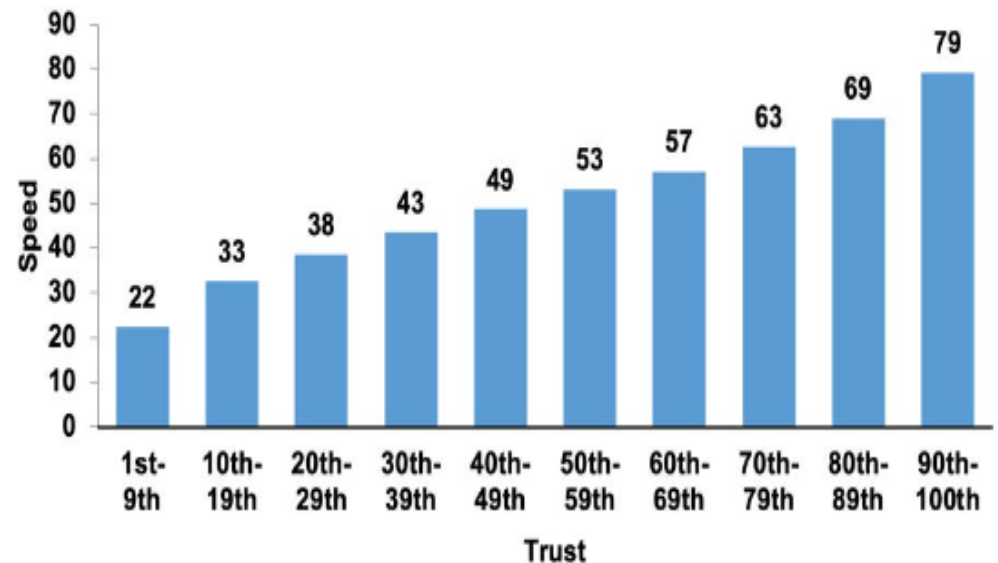
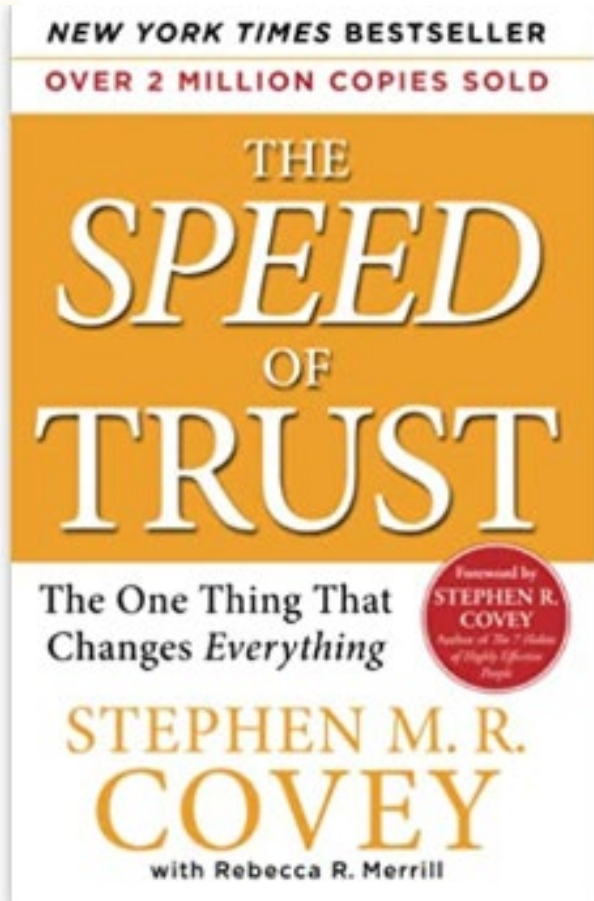
***FAST
OPEN
STABLE***

WHERE WE ARE: THE NEED TO OPTIMIZE FOR LEARNING



Source: Eric "Astro" Teller's idea explained in Thomas Friedman's "Thank You for Being Late," 2016.

How do we get faster?




Speed of Trust by Stephen Covey
Graph by Joseph Folkman

Why are we changing the Board Committee structure for the committees on Policy, Teaching and Learning, Equity, and Finance?

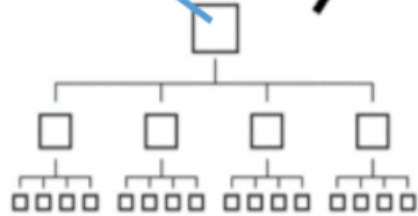
To become more flexible for speed and to build trust between administration and BOE members.

How do we continue to improve through collaboration and community input?

By creating a Community Advisory Council (CAC) to be a team of teams, representing many interests, expertise and backgrounds.



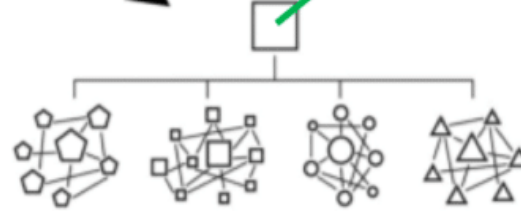
Traditional Leader



Command

A traditional top-down structure. The connections that matter are between workers and their managers.

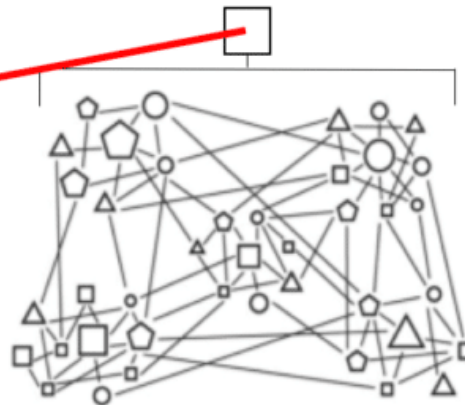
Transition Leader



Command of Teams

Small teams operate independently but still within a more rigid superstructure

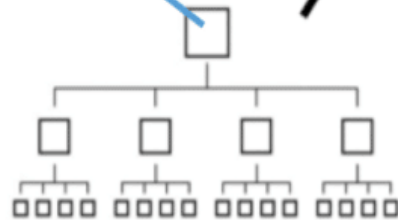
Design Centric Leader



Team of Teams

The relationship among teams resembles the closeness among individuals on those teams.

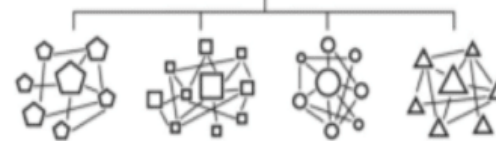
**Current SD308
Board
Committees**



Command

A traditional top-down structure. The connections that matter are between workers and their managers.

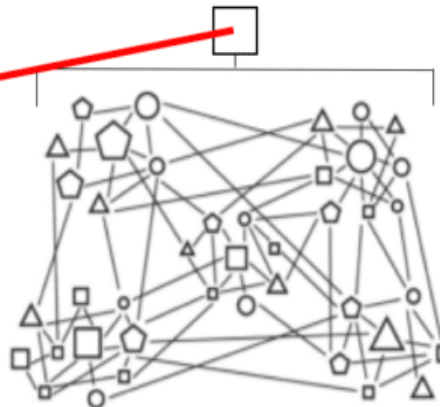
**Transition
Leader**



Command of Teams

Small teams operate independently but still within a more rigid superstructure

**Future SD308
Community
Advisory
Committees**



Team of Teams

The relationship among teams resembles the closeness among individuals on those teams.

What Questions Do You Have

