



December 16, 2019

Sarah Asson  
School Attendance Zone Study  
The Pennsylvania State University  
University Park, PA 16802

**VIA EMAIL – [schoolboundaries@psu.edu](mailto:schoolboundaries@psu.edu)**

Re: FOIA Request Dated December 9, 2019 and received December 9, 2019

Subject: A request for copies of public records that delineate current and historical school attendance zone boundaries for School District 308. These are the boundaries that determine which specific school a student will attend based on where they live within the school district. Specifically requesting the following records:

- Current Attendance Zone Boundaries Shapefiles – Geographic Information system copies of the current high school, middle school, and elementary school attendance zone boundaries for School District 308.
- Historical Attendance Zone Boundary Maps – Historical maps or descriptions of high school, middle school, and elementary school attendance zone boundaries for School District 308 from the 1989-1990 school year and the 1999-2000 school year, or the years closest to those years if those specific years are unavailable.

Dear Ms. Asson:

This letter will serve as Oswego Community Unit School District 308's response to your December 9, 2019 request under the Freedom of Information Act (5 ILCS 140/1 et seq.), in which you asked for the above referenced information. The information responsive to your request is attached.

To promote district transparency and assist others who may have a similar question, this responsive document will be posted online on the district's website. To access it, go to [www.sd308.org](http://www.sd308.org) and select *Our District > Freedom of Information Act Request > FOIA Request Responses*, then select *FOIA ID #19-57*.

Please be advised that to comply with your FOIA request, the district incurred an expense that comprised of the cost of labor and resources used to search for records responsive to your request

Please let me know if you have additional questions. Thank you.

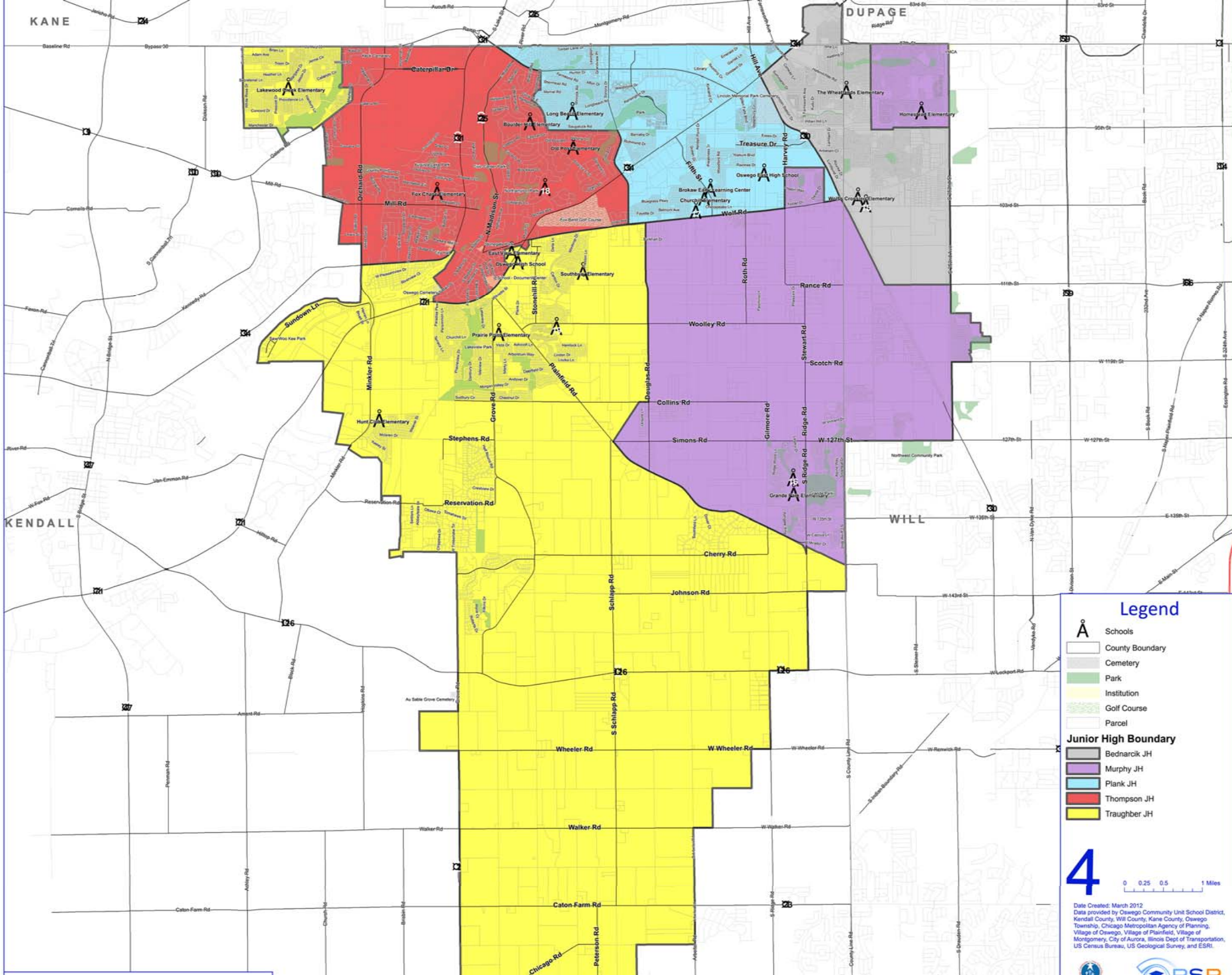
*Mary Anne Buckley*

Mary Anne Buckley  
Freedom of Information Officer









### Legend

- Schools
- County Boundary
- Cemetery
- Park
- Institution
- Golf Course
- Parcel
- Junior High Boundary**
  - Bednarcik JH
  - Murphy JH
  - Plank JH
  - Thompson JH
  - Traugber JH

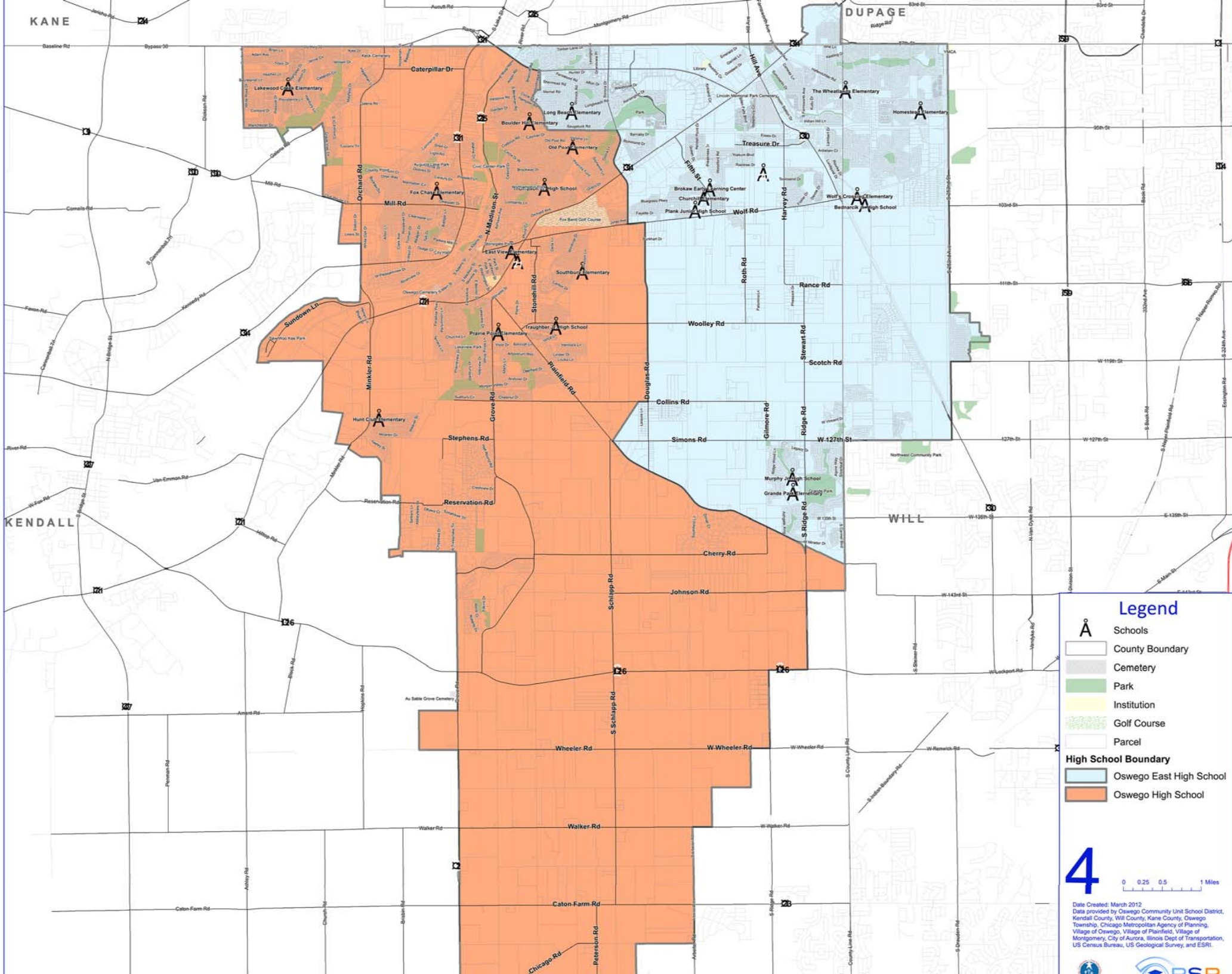
4

0 0.25 0.5 1 Miles

Date Created: March 2012  
Data provided by Oswego Community Unit School District,  
Kendall County, Will County, Kane County, Oswego  
Township, Chicago Metropolitan Agency of Planning,  
Village of Oswego, Village of Plainfield, Village of  
Montgomery, City of Aurora, Illinois Dept of Transportation,  
US Census Bureau, US Geological Survey, and ESRI.







### Legend

- Schools
- County Boundary
- Cemetery
- Park
- Institution
- Golf Course
- Parcel

#### High School Boundary

- Oswego East High School
- Oswego High School

# 4

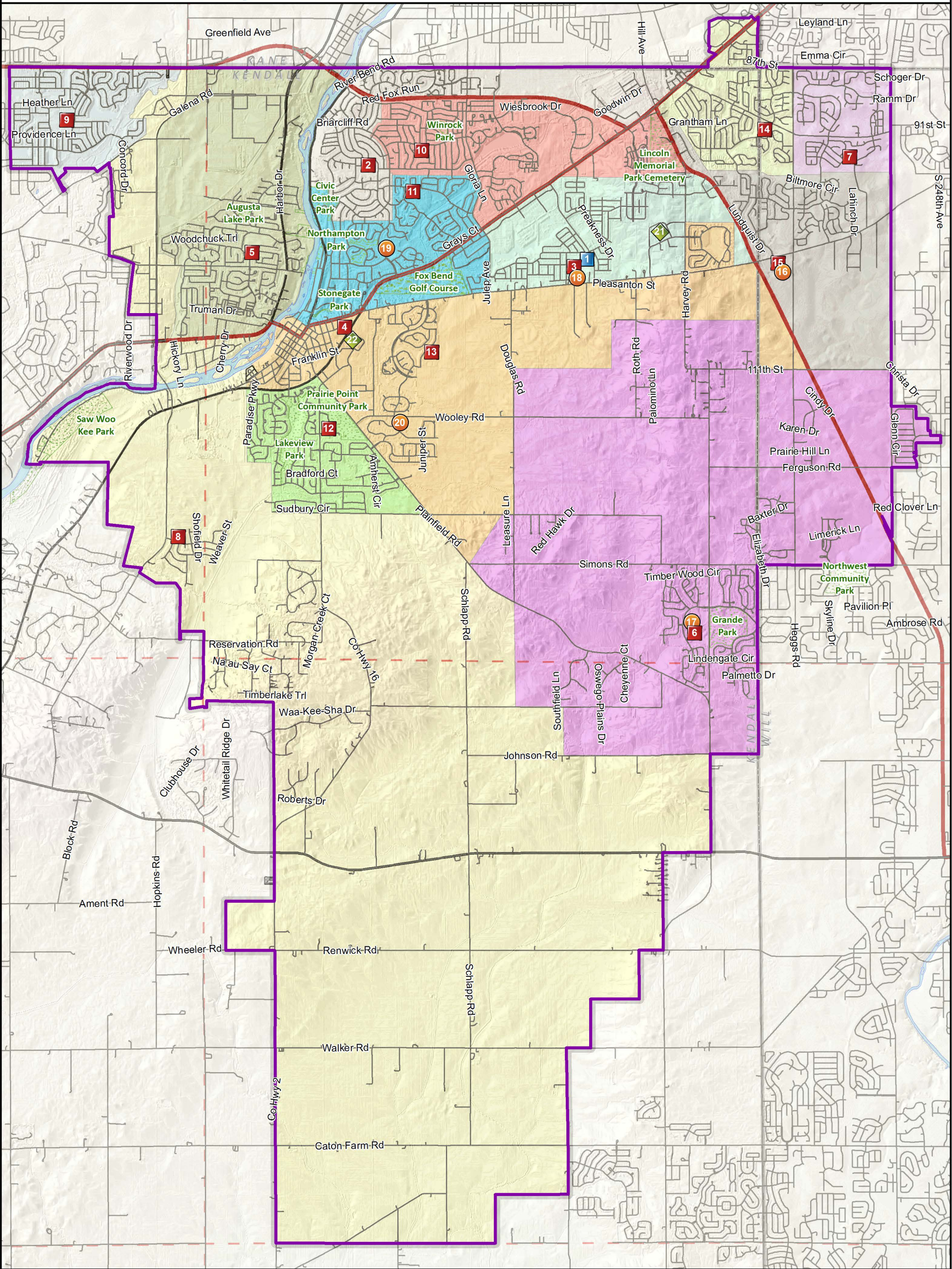
0 0.25 0.5 1 Miles

Date Created: March 2012  
Data provided by Oswego Community Unit School District, Kane County, Will County, Kane County, Oswego Township, Chicago Metropolitan Agency of Planning, Village of Oswego, Village of Plainfield, Village of Montgomery, City of Aurora, Illinois Dept of Transportation, US Census Bureau, US Geological Survey, and ESRI.



# Community Unit School District 308

## 2017/18 Elementary Attendance Areas



**List of Schools**

- |                                  |                                |
|----------------------------------|--------------------------------|
| 1. Brokaw Early Learning Center  | 13. Southbury Elementary       |
| 2. Boulder Hill Elementary       | 14. The Wheatlands Elementary  |
| 3. Churchill Elementary          | 15. Wolf's Crossing Elementary |
| 4. East View Kindergarten Center | 16. Bednarcik Jr. High School  |
| 5. Fox Chase Elementary          | 17. Murphy Jr. High School     |
| 6. Grande Park Elementary        | 18. Plank Jr. High School      |
| 7. Homestead Elementary          | 19. Thompson Jr. High School   |
| 8. Hunt Club Elementary          | 20. Traugher Jr. High School   |
| 9. Lakewood Creek Elementary     | 21. Oswego East High School    |
| 10. Long Beach Elementary        | 22. Oswego High School         |
| 11. Old Post Elementary          |                                |
| 12. Prairie Point Elementary     |                                |

- |                              |                     |
|------------------------------|---------------------|
| District Boundary            | Junior High Schools |
| County Boundary              | High Schools        |
| Township Boundary            |                     |
| Park                         |                     |
| Golf Course                  |                     |
| Brokaw Early Learning Center |                     |
| Elementary Schools           |                     |

**BOE Adopted December 12, 2016**

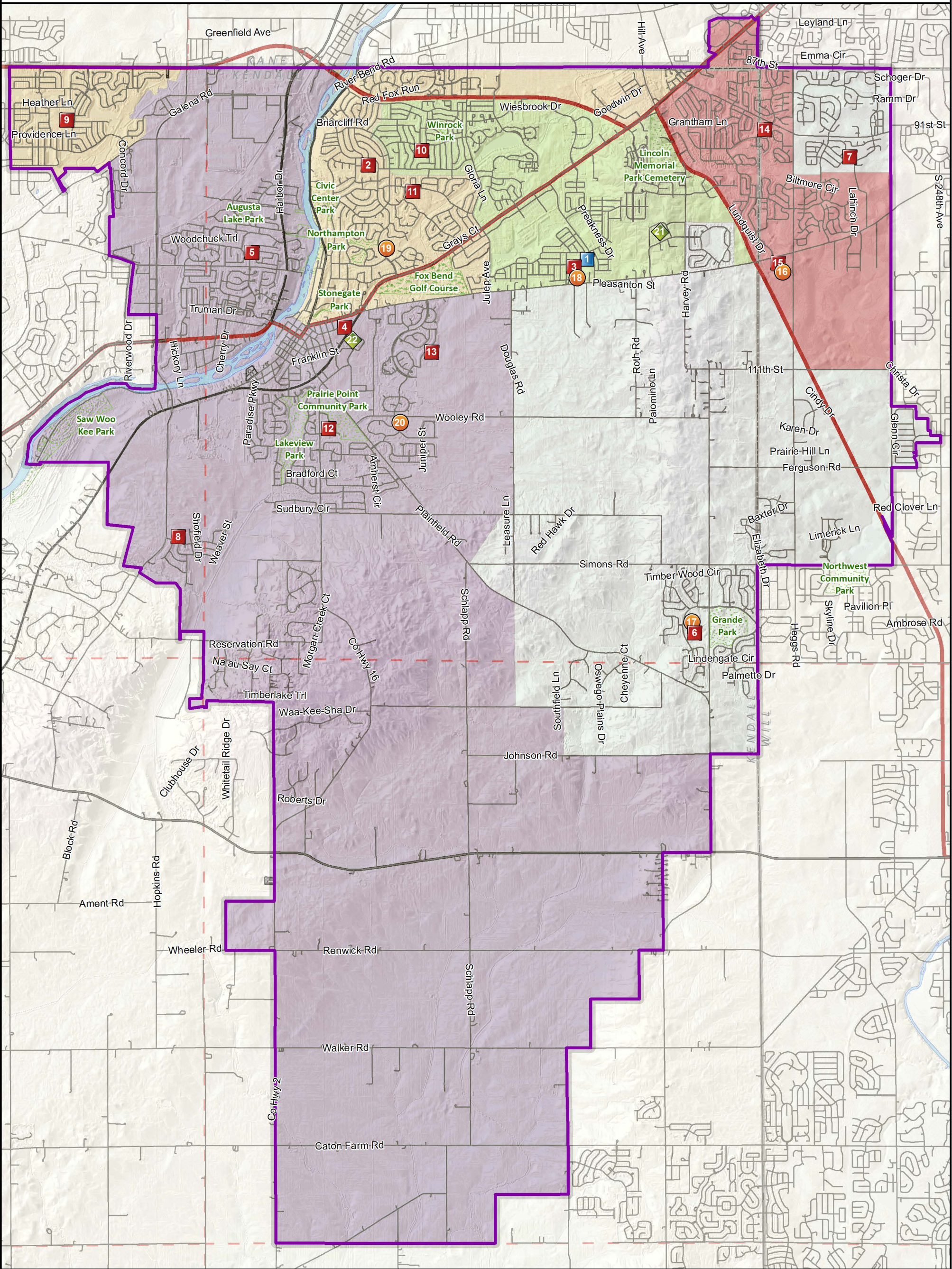
Miles  
0 0.75 1.5

Mapping data provided by Kane County, Kendall County, Will County, City of Aurora, City of Joliet, Village of Plainfield, Village of Oswego, Village of Montgomery, Oswego Township, Wheatland Township, CUSD 308, US Census Bureau, USGS and Esri. Map created December 2016 by RSP & Associates.



# Community Unit School District 308

## 2017/18 Junior High Attendance Areas



**List of Schools**

- |                                  |                                |
|----------------------------------|--------------------------------|
| 1. Brokaw Early Learning Center  | 13. Southbury Elementary       |
| 2. Boulder Hill Elementary       | 14. The Wheatlands Elementary  |
| 3. Churchill Elementary          | 15. Wolf's Crossing Elementary |
| 4. East View Kindergarten Center | 16. Bednarcik Jr. High School  |
| 5. Fox Chase Elementary          | 17. Murphy Jr. High School     |
| 6. Grande Park Elementary        | 18. Plank Jr. High School      |
| 7. Homestead Elementary          | 19. Thompson Jr. High School   |
| 8. Hunt Club Elementary          | 20. Traugher Jr. High School   |
| 9. Lakewood Creek Elementary     | 21. Oswego East High School    |
| 10. Long Beach Elementary        | 22. Oswego High School         |
| 11. Old Post Elementary          |                                |
| 12. Prairie Point Elementary     |                                |

- |                              |                     |
|------------------------------|---------------------|
| District Boundary            | Junior High Schools |
| County Boundary              | High Schools        |
| Township Boundary            |                     |
| Park                         |                     |
| Golf Course                  |                     |
| Brokaw Early Learning Center |                     |
| Elementary Schools           |                     |

**BOE Adopted December 12, 2016**



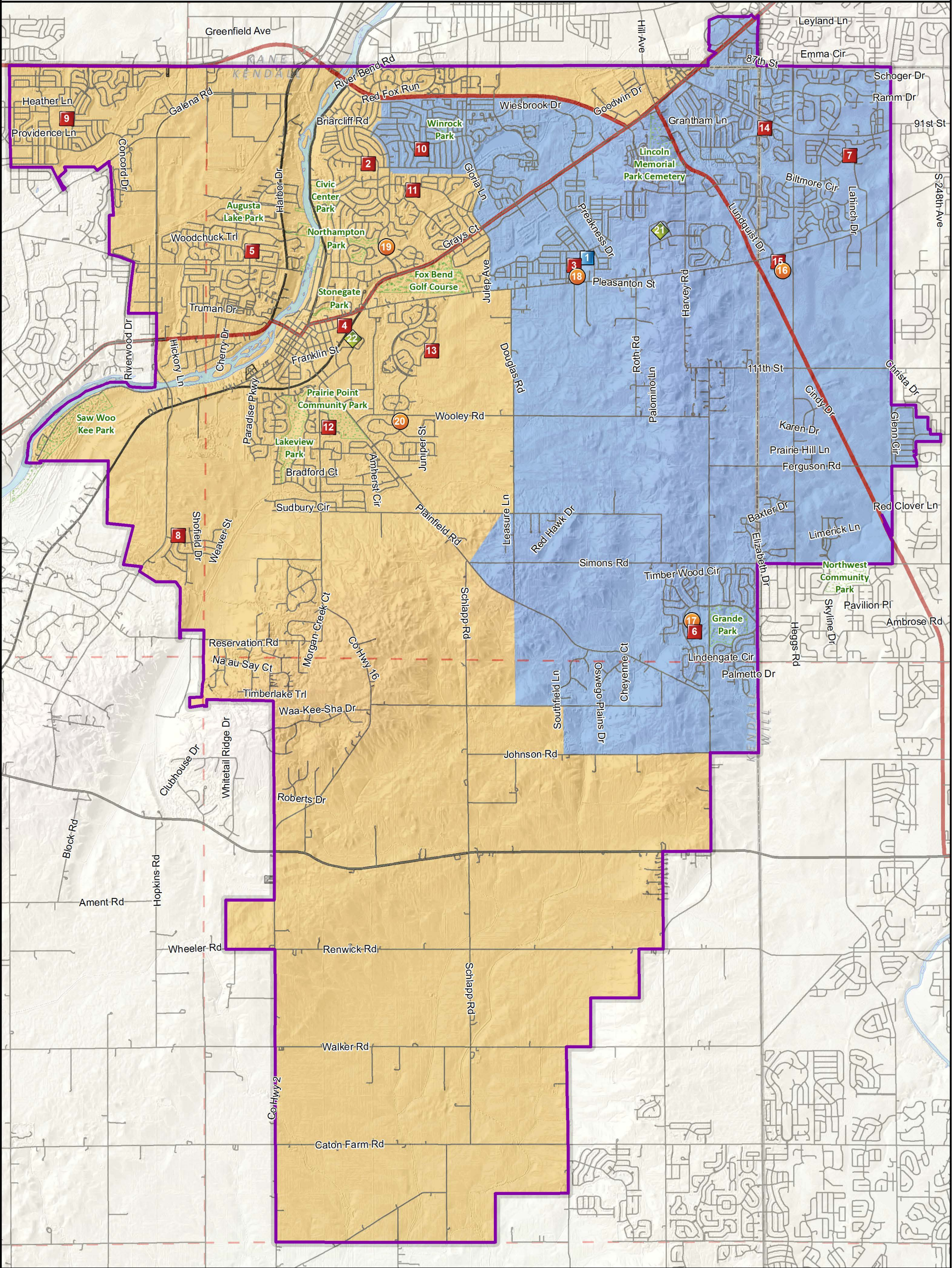
0 0.75 1.5  
Miles

Mapping data provided by Kane County, Kendall County, Will County, City of Aurora, City of Joliet, Village of Plainfield, Village of Oswego, Village of Montgomery, Oswego Township, Wheatland Township, CUSD 308, US Census Bureau, USGS and Esri. Map created December 2016 by RSP & Associates.



# Community Unit School District 308

## 2017/18 High Attendance Areas



- List of Schools**
- |                                  |                                |
|----------------------------------|--------------------------------|
| 1. Brokaw Early Learning Center  | 13. Southbury Elementary       |
| 2. Boulder Hill Elementary       | 14. The Wheatlands Elementary  |
| 3. Churchill Elementary          | 15. Wolf's Crossing Elementary |
| 4. East View Kindergarten Center | 16. Bednarcik Jr. High School  |
| 5. Fox Chase Elementary          | 17. Murphy Jr. High School     |
| 6. Grande Park Elementary        | 18. Plank Jr. High School      |
| 7. Homestead Elementary          | 19. Thompson Jr. High School   |
| 8. Hunt Club Elementary          | 20. Traugher Jr. High School   |
| 9. Lakewood Creek Elementary     | 21. Oswego East High School    |
| 10. Long Beach Elementary        | 22. Oswego High School         |
| 11. Old Post Elementary          |                                |
| 12. Prairie Point Elementary     |                                |

- |                              |                     |
|------------------------------|---------------------|
| District Boundary            | Junior High Schools |
| County Boundary              | High Schools        |
| Township Boundary            |                     |
| Park                         |                     |
| Golf Course                  |                     |
| Brokaw Early Learning Center |                     |
| Elementary Schools           |                     |

**BOE Adopted December 12, 2016**



Miles  
0 0.75 1.5

Mapping data provided by Kane County, Kendall County, Will County, City of Aurora, City of Joliet, Village of Plainfield, Village of Oswego, Village of Montgomery, Oswego Township, Wheatland Township, CUSD 308, US Census Bureau, USGS and Esri. Map created December 2016 by RSP & Associates.